

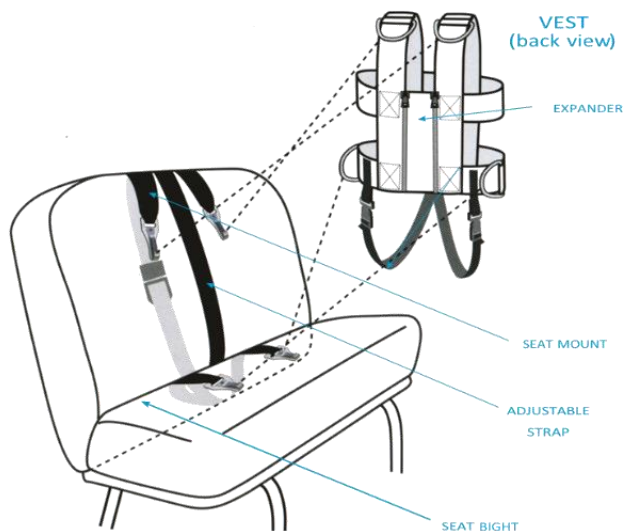
BESI Installation Instructions

Adjustable Securement Vest

1. Lift the cushion portion of the bench seat, and place the male end of the cam wrap buckle in the space between the seat cushion and seat back. Close and secure the seat cushion assembly. On some seats lifting the seat cushion is unnecessary. Simply push the male end of the seat mount through the seat bight, between the cushion and back until it is visible from behind and below the seat.
2. Place the female end of the seat mount buckle over the top of the seat back and bring the male end around from the bottom. Click belt buckle together making sure that red release button is facing inward toward the seat back.
3. Check to make sure that bottom hooks of seat mount are 1 to 3 inches out of the seat bight, then tighten the seat mount until an indentation is made in the top of the seat foam

Attaching Vest to Seat Mount

1. With passenger sitting down, secure the upper and lower D-rings of the vest to the snap hooks on the seat mount.
2. Make sure passenger is snug against the seat bottom and back. If adjustment is necessary unhook the top D-rings from the snap hooks and raise or lower the upper yoke of the seat mount using the provided adjuster, then secure D-rings.
3. Recheck to make sure that the seat mount is tight and make further adjustments as necessary.
4. For large and extra-large vests, a lap safety belt will also need to be threaded through the vest's two lower loops to secure the passenger to the seat.



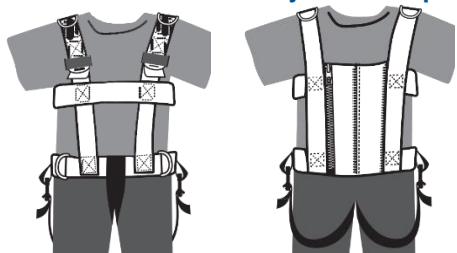
Warning! Securement must only be used on school bus seats. Entire seat directly behind must be unoccupied or have secured occupants

Recommended replacement after 6 years in service

Adjustable Securement Vest Insert Instructions

1. Place the vest on the passenger with zipper facing the rear.
2. Zip the vest from the rear making sure that it fits snug by selecting the correct zipper expander.
 - a. Universal Vests have adjustable expanders.
 - b. BESI Vest inserts are separate. Each insert expands 2 – 4 inches. Altogether, the maximum expansion is 6 inches.
3. The vest should fit as low on the hips as possible and should be placed under, not over heavy coats or other oversized winter garments.
4. On the Universal Vest, shoulder height adjustments can be made by holding the para adjuster with one hand and pulling down to tighten, or up to loosen the webbing.
5. Buckle the crotch strap (if equipped) and adjust length by pulling up or down on the webbing so that it is snug yet comfortable for the child.

Universal Vest with Adjustable Expander



VEST (front view) VEST (back view)

BESI Securement Vest with Separate Inserts



VEST (front view) VEST (back view)